

FOR BUSINESS AND ORGANIZATIONAL LEADERS

# EQ-Edge

INSPIRING CHANGE THROUGH GENEROUS AUTHORITY

**UNIQUE LEADERSHIP LAB ENVIRONMENT**  
LEARN, PRACTICE, APPLY



**6 IN-PERSON  
SESSIONS**

**SCRIPTS, TOOLS  
AND TECHNIQUES**

**3 VIRTUAL ZOOM  
SESSIONS**

[BlueEggLeadership.com](http://BlueEggLeadership.com)



# EQ-EDGE FOR BUSINESS & ORGANIZATIONAL LEADERS: CREATING AN EMOTIONALLY INTELLIGENT MINDSET



## LEAD BY DR. DENISE TRUDEAU POSKAS

EQ-Edge is designed to unlock your potential as a leader with capacity-building and leadership labs. To be an effective leader you need to become an agent of transformation, allowing you to reach unprecedented success. All good leaders know that it starts with their own evolution and taking 100% ownership in being the best leader possible.

UNLIKE MOST PROGRAMS, THIS IS A LEADERSHIP LAB ENVIRONMENT WHICH MEANS LEADERS WILL LEARN AND THEN PRACTICE THE NEW TECHNIQUES IN A SAFE PRACTICE ENVIRONMENT.



# WHO WILL BENEFIT FROM THIS PROGRAM?

This program provides business and organizational leaders with tools to shape their leadership, processes to streamline, strategies for creating an emotionally intelligent team, and language patterns for leading.

This leadership coaching program runs  
September 2022-March 2023  
12:30pm-6:00 pm

**REGISTER TODAY AT**  
[www.synovationvalleyleadership.org/eq-edge](http://www.synovationvalleyleadership.org/eq-edge)





# IGNITE YOUR GENIUS: A SIX-MONTH INTENSIVE

## LOCATION:

Central Community College - Ord  
Learning Center  
1514 K St, Ord, NE 68862

## CONTACT:

Questions? Please contact us at  
SynoVationValleyLeadership@gmail.com  
or Dr. Dee at  
Denise@BlueEggLeadership.com

## EARLY BIRD PRICING

Register before August 1, 2022 and  
receive **\$500** off  
program price.

## WHAT THE PROGRAM OFFERS

### 6 Full Day Coaching Sessions

**Dates:** September 17th, October 22nd,  
November 19th, January 21st, February 18th,  
March 18th

**Times:** 6 Fridays 12:30pm--6:00pm

### 3 Synchronistic Webinars

- **November 16, 2022**
- **December 14, 2022**
- **February 22, 2023**

: 12:00pm-1:15pm

## BONUSES:

- Two 60-minute Individual Coaching Session with Dr. Dee (Typically \$2400)
- Access to online resources to ignite your path
- Be a part of a network of people desiring their best lives
- Access to Wisdom Chronicles Newsletter
- Connect through our Mixers and Facebook Group Page!
- Integrated Leadership Manual with techniques for team building (Typically \$250)
- Leadership Labs at every in-person session
- Sample Hiring Portfolio Template
- Sample Strategy Meeting Template

## REGISTER TODAY AT

<https://www.synovationvalleyleadership.org/eq-edge>



# LIVE SESSIONS

01

## UNLOCKING THE KEY TO EMOTIONAL INTELLIGENCE

- What is the role of emotional intelligence?
- Self-actualization benchmarks
- What makes us tick?
- **LAB: Creating systemic benchmarks for your team**

02

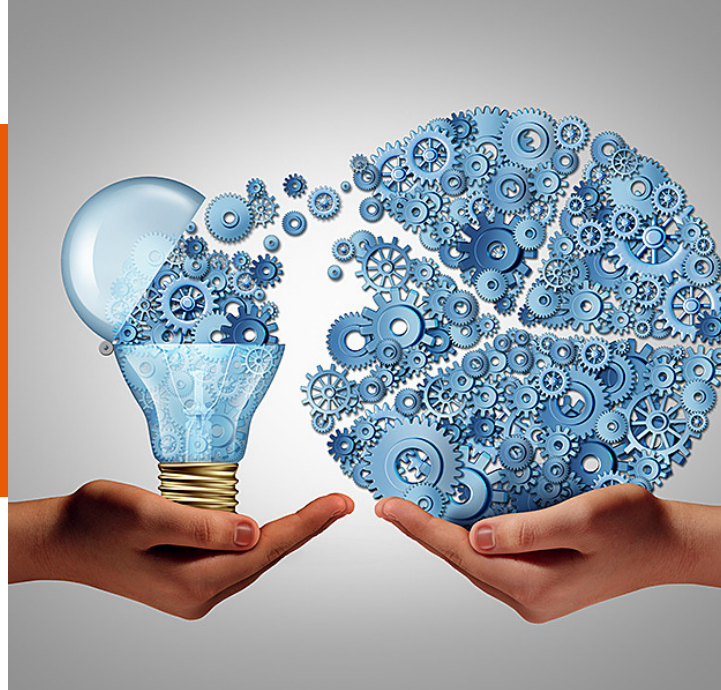
## CREATING EMOTIONALLY INTELLIGENT CULTURE CODE

- Building Interpersonal Relationships with teams
- Language techniques of influencers
- **LAB: Creating a Culture Code**

03

## INCREASING ENGAGEMENT

- Learn to use TPN & DMN
- Six Motivations
- Language techniques of influencers
- **LAB: Establishing Agreements**
- **LAB: Clarifying Vision to Motivate**
- **Others**





# LIVE SESSIONS

04

## CREATING A RESILIENT MINDSET

- Creating a stress tolerant culture
- RAS Maneuvers
- From IMPULSE to INNOVATION
- **LAB: Open Paradigm Perspective for Innovation**

05

## CULTIVATING ADAPTABILITY

- Leading teams through change
- Building Customer Enrollment In Times of Change
- State of Influence
- Language techniques of influencers
- **LAB: Serving Your Customers & Avatars**

06

## BUILDING OPTIMISM & HAPPINESS

- How do you hire for EI?
- Developing your HR portfolio
- Internal techniques for building optimism in teams
- The SQ-9
- **LAB: Hiring Practices for Talent Acquisition**

